



## One-Step Stain & Glaze

### IPS Empress CAD

**Step 1.** Refine emergence profile and line angles; finish margins and define surface texture.

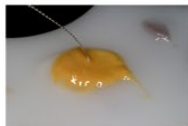
**Step 2.** Micro sand blast and steam clean surfaces.

**Step 3.** Apply clear glaze to external surface of restoration.

**Step 4.** Apply cervical mixed stain and glaze, extending into proximal surfaces ("framing").



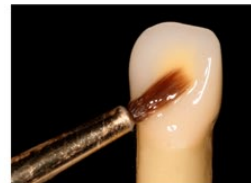
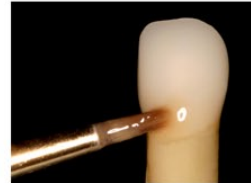
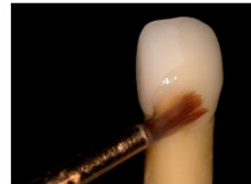
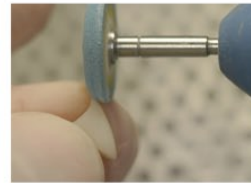
**Step 5.** Apply mixed orange stain and glaze to mid lingual concavity.



**Step 6.** Apply incisal stain characteristics. Keep to a minimal.

**Step 7.** Apply mixed white stain and glaze to incisal line angles and mammelon effects.

**Step 8.** " Into the oven they go! "



## Anterior