



One-Step Stain & Glaze

IPS Empress CAD

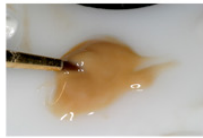
Posterior

Step 1. Refine emergence profile and line angles. Finish margins and define primary occlusal anatomy.

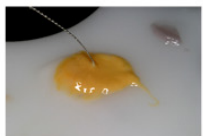
Step 2. Micro sand blast and steam clean surfaces.

Step 3. Apply clear glaze to external surface of restoration. Avoid puddles in occlusal grooves and pits.

Step 4. Apply cervical mixed stain and glaze, extending into proximal surfaces.



Step 5. Apply mixed orange stain and glaze to mid triangular ridges with #15 file.



Step 6. Apply occlusal groove/pit stain with #10 file. With prior refined anatomy, color will stay defined. Less is more with the color mahogany or #4.

Step 7. Apply mixed white stain and glaze to marginal and triangular ridges.

Step 8. " Into the oven they go! "

